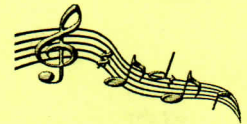
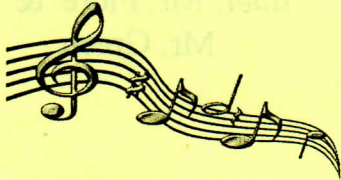


Footlight Players, Inc.
Presents

A Song Recital

April 24, 2015 and April 25, 2015 - 7:30 pm
The Church of The Ascension, Rockville Centre, New York

Nathaniel Green, director
Tamara Cashour, musical accompaniment



Si può?

from *Pagliacci*, Ruggiero Leoncavallo
*This prologue tells us that, just like you,
the actors feel real emotions of flesh and blood,
because they are human too.*

Nathaniel Green,
baritone

Tombe degli avi miei

from *Lucia di Lammermoor*, Gaetano Donizetti

Juan Franco,
tenor

Una voce poco fa

from *The Barber of Seville*, Gioachino Rossini

Angelika Nair,
mezzo-soprano

Dunque io son!

from *The Barber of Seville*, Gioachino Rossini

duet: Ms. Nair &
Mr. Green

Ich lade gern mir Gäste ein

from *Die Fledermaus*, Johann Strauss

Angelika Nair

Che gelida manina

from *La Bohème*, Giacomo Puccini

Juan Franco

Mi chiamano Mimi

from *La Bohème*, Giacomo Puccini

Gina Haver,
soprano

O soave fanciulla

from *La Bohème*, Giacomo Puccini

duet: Ms. Haver &
Mr. Franco

Avant de quitter ces lieux from <i>Faust</i> , Charles Gounod	Stuart Whalen, <i>baritone</i>
Eri tu from <i>Un Ballo in Maschera</i> , Giuseppe Verdi	Stuart Whalen
E lucevan le stelle from <i>Tosca</i> , Giacomo Puccini	Dante Fiore, <i>tenor</i>
Solenne in quest'ora from <i>La Forza del Destino</i> , Giuseppe Verdi	<i>duet</i> : Mr. Fiore & Mr. Green
- INTERMISSION -	
Second Hand Rose from <i>Funny Girl</i> et al, James Hanley	Susan Panzarella, <i>soprano</i>
If I Were a Bell from <i>Guys and Dolls</i> , Frank Loesser	Susan Panzarella
Some Enchanted Evening from <i>South Pacific</i> , Richard Rodgers	Stuart Whalen
Core 'Ngrato <i>Neapolitan</i> , Salvatore Cardillo	Dante Fiore
Maria from <i>West Side Story</i> , Leonard Bernstein	Juan Franco
Not a Day Goes By from <i>Merrily We Roll Along</i> , Stephen Sondheim	Gina Haver
Thank You for the Music <i>ABBA</i> , Benny Andersson & Björn Ulvaeus	Angelika Nair
The Impossible Dream from <i>Man of La Mancha</i> , Mitch Leigh	Nathaniel Green
Danny Boy <i>Traditional</i> , Frederick Weatherly	Nathaniel Green